

D

C

B

A

D

C

B

A

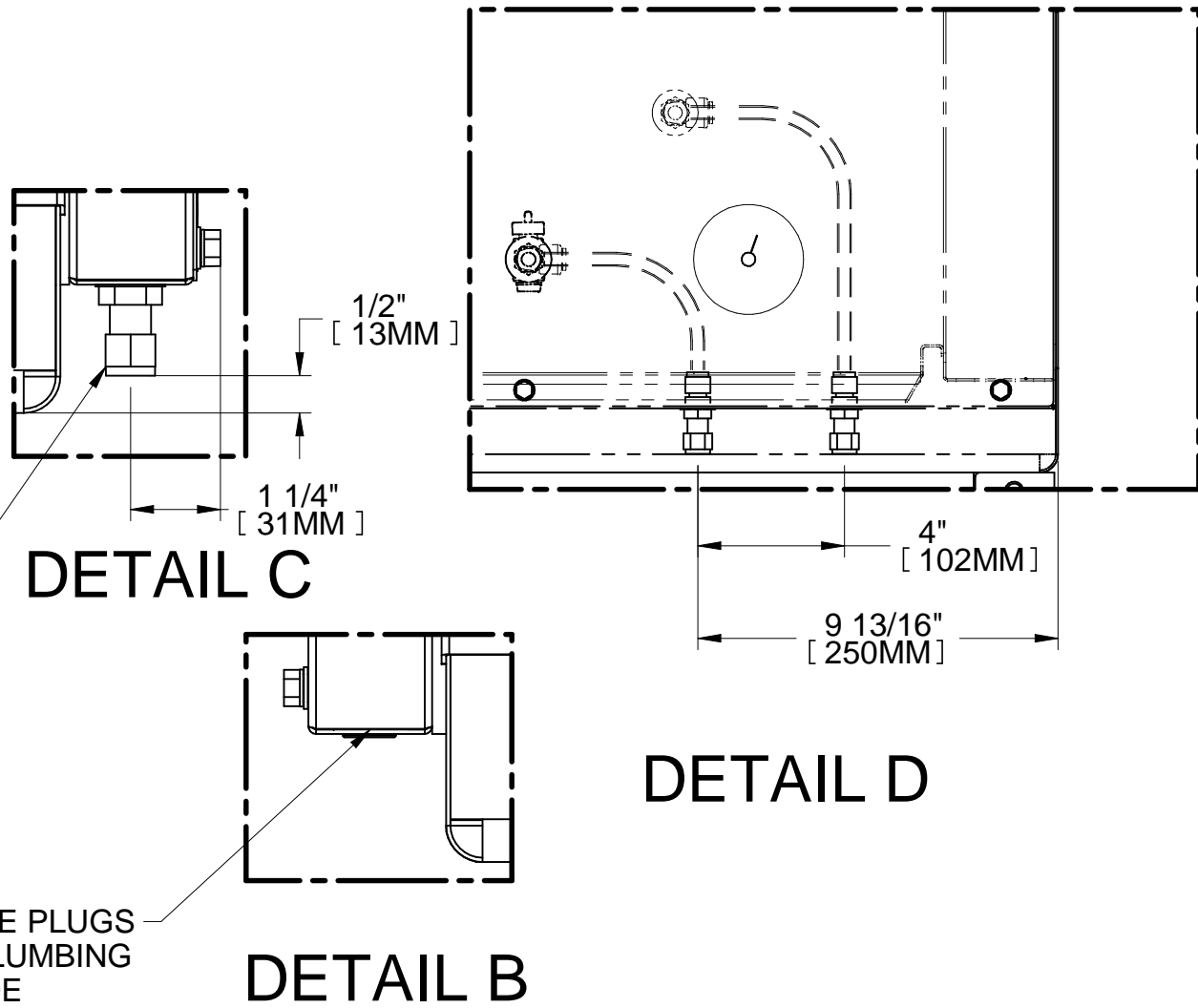
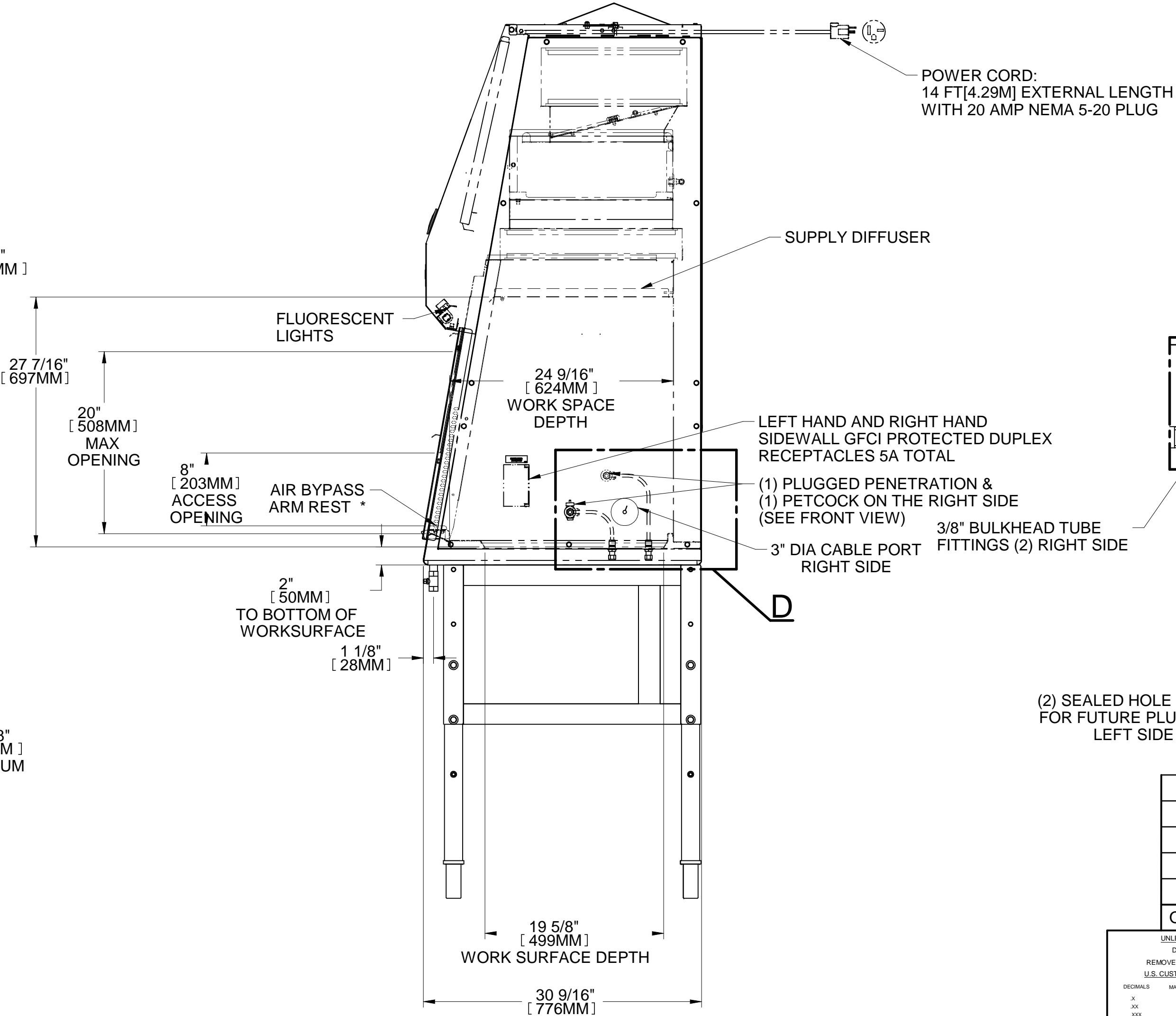
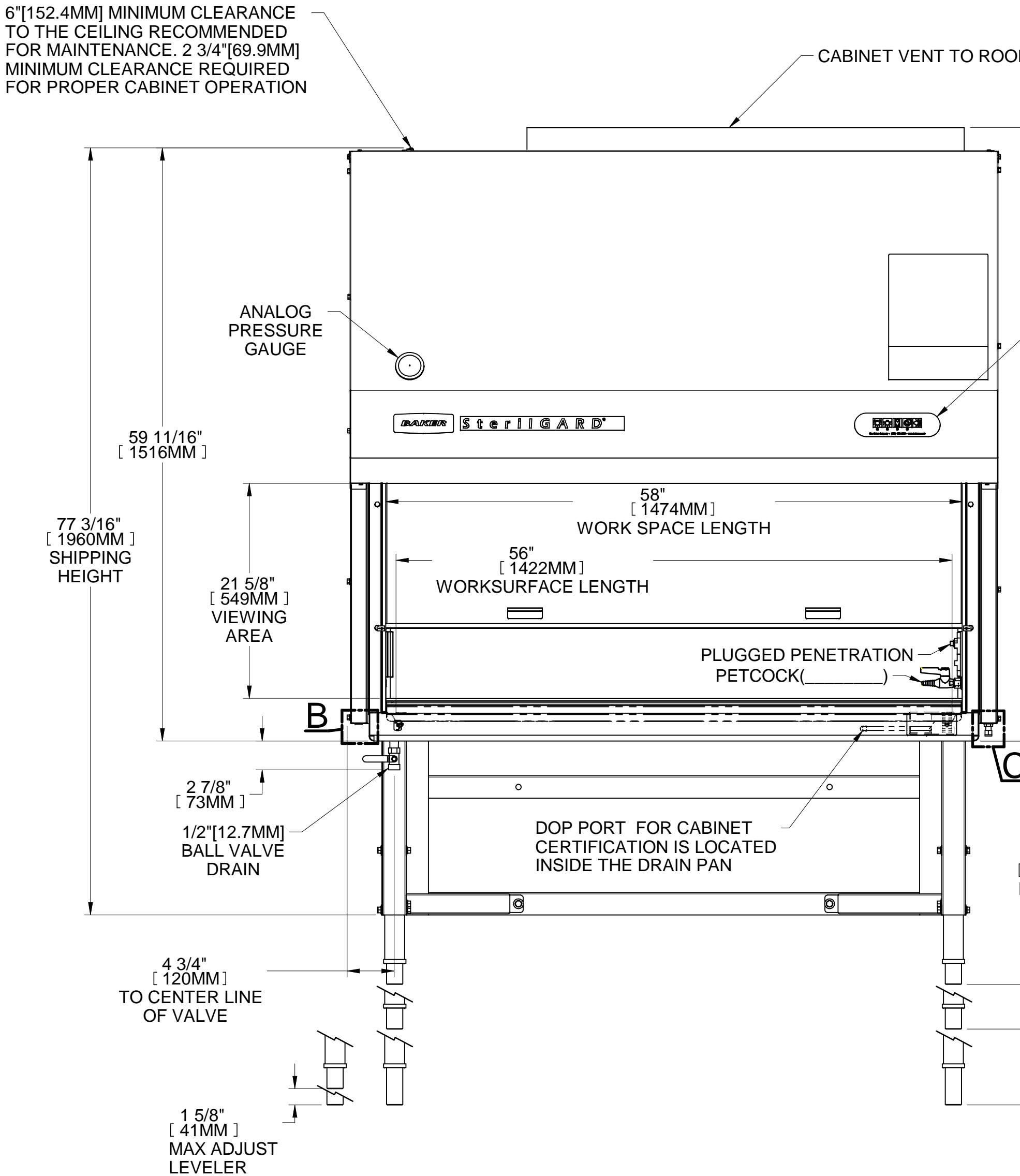
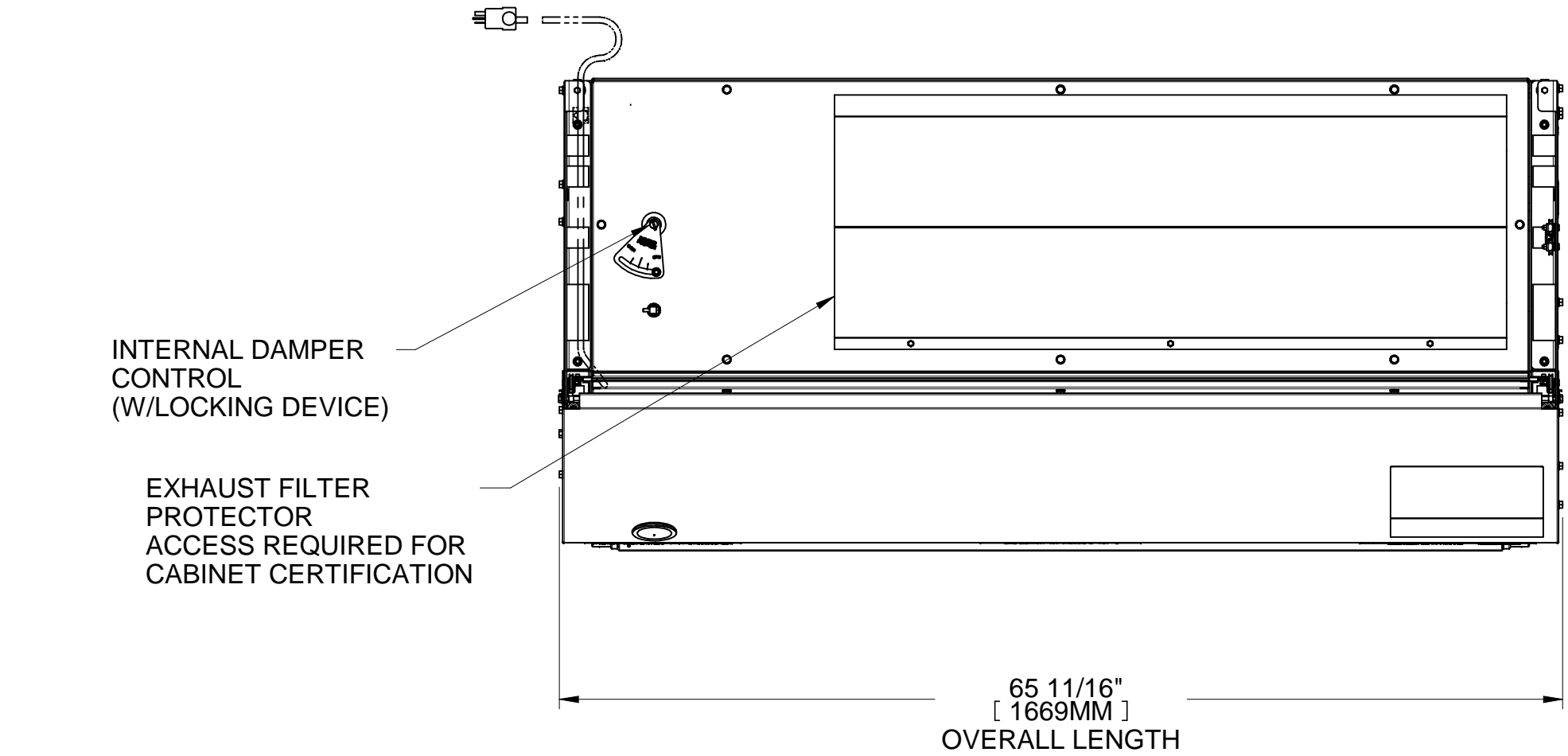
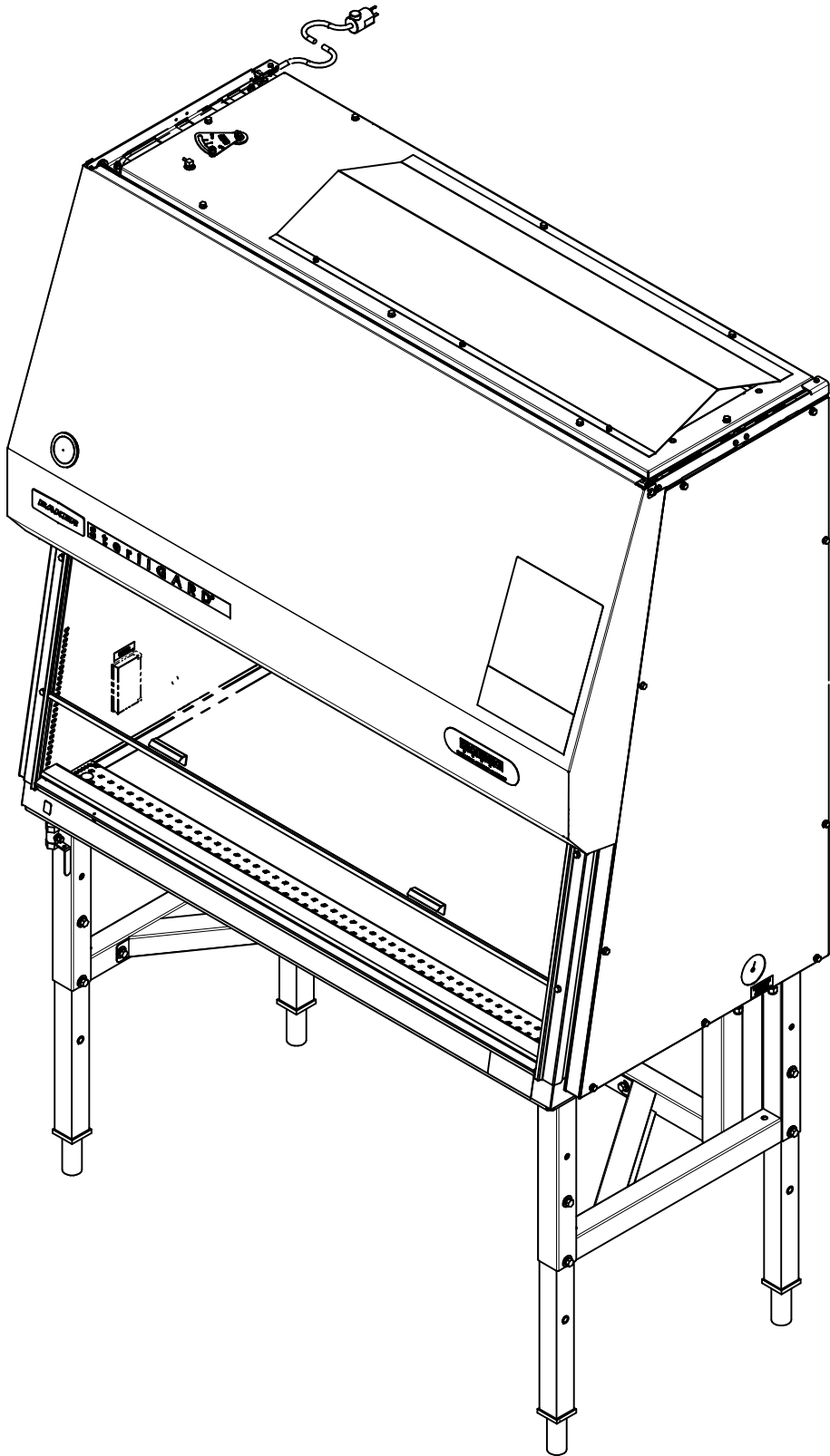
REV	DESCRIPTION	DATE	DRN	APP-BY	APP-DATE
A	ORIGINAL RELEASE	-	-	-	-
B	UPDATED GEOMETRY, TEXT AND TITLE BLOCK WITH LATEST FROM TEMPLATE	12/20/2016	C.W.Q., JR.	HChabot	12/20/2016

- NOTES:
1. ELECTRICAL REQUIREMENTS: 115 VAC, 20 AMP, 60 HZ, SINGLE PHASE
 2. CONSTRUCTION:
WORKSURFACE/WORK AREA - 16 GA[1.5 MM] 304 SS, #4 FINISH
ACCESS PANELS - 16[1.5 MM] & 18 GA[1.2 MM] C.R.S. WITH A BAKER PERMA WHITE POLYESTER HYBRID POWDER COAT FINISH
 3. FILTER, MOTOR, BLOWER AND ALL ELECTRICAL COMPONENTS ARE FRONT ACCESSIBLE.
 4. PETCOCKS RECOMMENDED FOR USE WITH NONFLAMMABLE GAS, AIR OR VACUUM
 5. PLUMBING CONFIGURATION IS FACTORY ASSEMBLED AND TESTED AT 100 Psi (689 kPa).
MAXIMUM WORKING PRESSURE IS 75 Psi (517 kPa).

PLEASE ADVISE OF ANY SPECIAL PLUMBING REQUIRED BY LOCAL PLUMBING CODES

6. CABINET PLUMBING CONNECTORS ARE 3/8" TUBE FITTINGS.

NOTE: REFER TO THE LATEST VERSION OF PRODUCT SPECIFICATION SHEET FOR THE EXHAUST REQUIREMENTS OF THIS MODEL



STANDARD UNIT WEIGHT(NO STAND) = 714 LBS [325 KG]
WITH CHANNEL STAND = 790 LBS [343 KG]
WITH CHANNEL STAND & CASTERS = 800 LBS [339 KG]
WITH POWERED LIFT STAND = 927 LBS [422 KG]



* = PATENT PENDING

-	-	-
-	-	-
-	-	-
111R	CABLE PORT - RIGHT SIDE	1
1	CHANNEL STAND	1
OPTION #	OPTION DESCRIPTION	QTY

UNLESS OTHERWISE SPECIFIED: DO NOT SCALE DRAWING. REMOVE ALL BURRS AND SHARP EDGES. U.S. CUSTOMARY TOLERANCES (INCHES): DECIMALS MACHINED SHEET METAL ANGULAR X .002 .006 .0075 (1°) XX .001 .003 .003 XXX .0005 .0010 .0010 .0010 FRACTIONS .0005 .0010 FINISH 15° NO.4 POLISHED		ALL ITEMS MUST BE RoHS COMPLIANT		THIS DRAWING AND ITS CONTENTS ARE THE PROPERTY OF THE BAKER COMPANY. THE INFORMATION CONTAINED HEREIN IS TO BE USED ONLY FOR THE PROJECT AND NOT REPRODUCED OR TRANSMITTED WITHOUT THE WRITTEN PERMISSION OF BAKER.	
DRAWN AVanDintel		DATE 12/17/2013		TITLE STERILGARD, MODEL SG504 CLASS II TYPE A2	
CHECKED C.W.Q., JR.		DATE 1/02/2014		SIZE D DWG NO BGA-SG504-A2-1-111R	
SCALE 1 : 10		SHEET 1 OF 1		REV B	